

--	--

1	2016-09-12	ISM	UPDATED FOR FINAL REPORT
NO.	DATE	BY	REVISIONS


**McElhanney**  
 McElhanney Consulting Services Ltd.  
 500 - 3960 QUADRA STREET  
 VICTORIA, BC V8X 4A3  
 PH (250) 370-9221  
 FAX (250) 370-9223

SCALE	
HORIZ: NTS	VERT: N/A
PROJECT NO. 15-326	ISSUED/REVISION 1
APPROVING AUTHORITY FILE NO.	
DRAWING NO.	
FIGURE 3B	

<b>PUMP QUANTITIES</b>
<b>OPTION 3 - RUTLAND CATCHMENT</b>
PROPOSED PUMPS = 235
EXISTING PUMPS = 7
TOTAL PROPERTIES TO BE SERVICED = 242

SEPTEMBER 12, 2016

0 50 150m

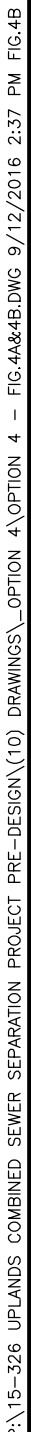
1:2500




















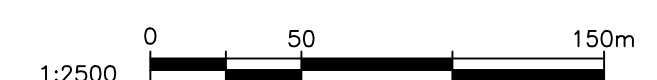


PUMP QUANTITIES  
OPTION 4 - RUTLAND CATCHMENT  
 PROPOSED PUMPS = 108  
 EXISTING PUMPS = 6  
 TOTAL PROPERTIES TO BE  
 SERVICED = 242

**LEGEND:**

	LOW BEDROCK PROBABILITY PER WSP GEOTECHNICAL INVESTIGATION REPORT
	MODERATE BEDROCK PROBABILITY PER WSP GEOTECHNICAL INVESTIGATION REPORT
	HIGH BEDROCK PROBABILITY PER WSP GEOTECHNICAL INVESTIGATION REPORT
	EXISTING SANITARY SEWER
	EXISTING STORM DRAIN
	COMBINED SANITARY/STORM DRAIN SYSTEMS
	PROPOSED GRAVITY STORM DRAIN
	PROPOSED LOW PRESSURE STORM DRAIN
	PROPOSED LOW PRESSURE STORM DRAIN PUMP
	EXISTING STORM DRAIN PUMP
	PROPOSED COMMUNITY STORM DRAIN PUMP STATION

FOR INFORMATION  
ONLY



**McElhanney**  
McElhanney Consulting Services Ltd.  
500 - 3960 QUADRA STREET PH (250) 370-9221  
VICTORIA, BC V8X 4A3 FAX (250) 370-9223

TITLE:  
RUTLAND CATCHMENT

SCALE	
HORIZ: NTS	VERT: N/A
PROJECT NO. 15-326	ISSUED/REVISION 1
APPROVING AUTHORITY FILE NO.	
DRAWING NO.	

**FIGURE 4B**

[illegible]





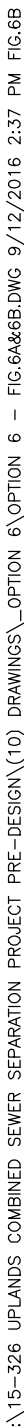












THIS DRAWING AND DESIGN IS THE PROPERTY OF McELHANNAY CONSULTING SERVICES LTD. AND SHALL NOT BE USED, REUSED, OR REPRODUCED WITHOUT THE CONSENT OF THE SAID COMPANY. McELHANNAY CONSULTING SERVICES LTD. WILL NOT BE HELD RESPONSIBLE FOR THE IMPROPER OR UNAUTHORIZED USE OF THIS DRAWING AND DESIGN.

[illegible]

# McElhanney

McElhanney Consulting Services Ltd.

500 - 3960 QUADRA STREET  
VICTORIA, BC V8X 4A3

PH (250) 370-9221  
FAX (250) 370-9223

SEAL

PROJECT:  
 UPLANDS COMBINED SEWER SEPARATION  
 OPTION 6 - PROPOSED HYBRID SYSTEM: SHALLOW GRAVITY SANITARY  
 SEWER SYSTEM, LOCALIZED COMMUNITY SANITARY PUMPING STATIONS  
 WHERE NECESSARY AND EXISTING SYSTEM AS STORM DRAIN

TITLE:  
RUTLAND CATCHMENT

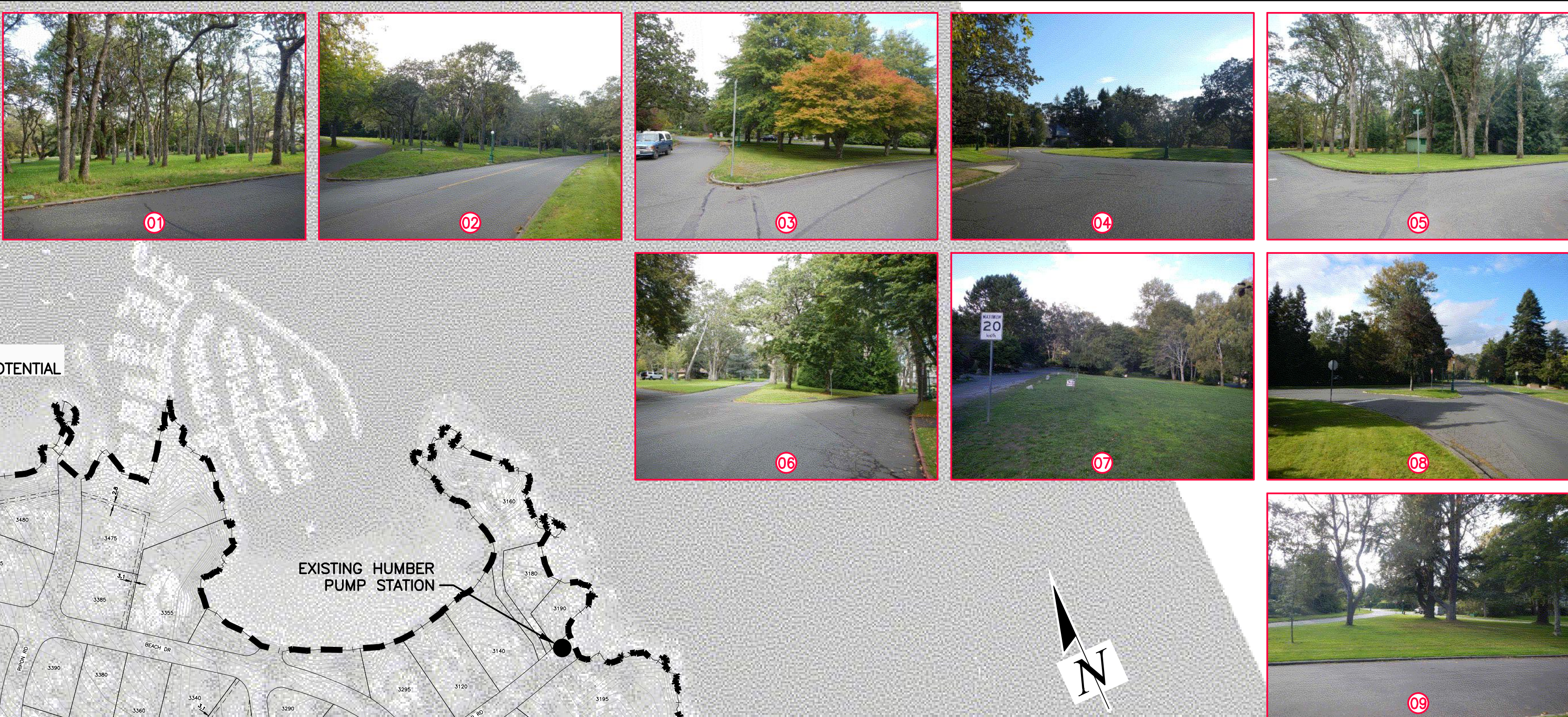
SCALE

HORIZ: NTS	VERT: N/A
PROJECT NO. 15-326	ISSUED/REVISION 1

APPROVING AUTHORITY FILE NO.

DRAWING NO. **FIGURE 6B**





NOTE:  
PRIVATE PROPERTY CISTERNS = 3 cu.m. EACH  
TOTAL PRIVATE CISTERNS = 1180 cu.m.  
STORAGE AT FULL BUILDOUT

**LEGEND:**

- LOCATION OF PHOTO
- DIRECTION PHOTO IS TAKEN
- POSSIBLE COMMUNITY STORMWATER STORAGE LOCATION

OCTOBER 2015  
**FOR INFORMATION ONLY**

THIS DRAWING AND DESIGN IS THE PROPERTY OF McElhanney Consulting Services Ltd. AND SHALL NOT BE USED, REUSED, OR REPRODUCED WITHOUT THE CONSENT OF THE SAID COMPANY. McElhanney Consulting Services Ltd. WILL NOT BE HELD RESPONSIBLE FOR THE IMPROPER OR UNAUTHORIZED USE OF THIS DRAWING AND DESIGN.

NO.	DATE	BY	ISSUED	NO.	DATE	BY	REVISIONS

**McElhanney**  
McElhanney Consulting Services Ltd.  
500 - 3960 QUADRA STREET  
VICTORIA, BC V8X 4A3

PH (250) 370-9221  
FAX (250) 370-9223

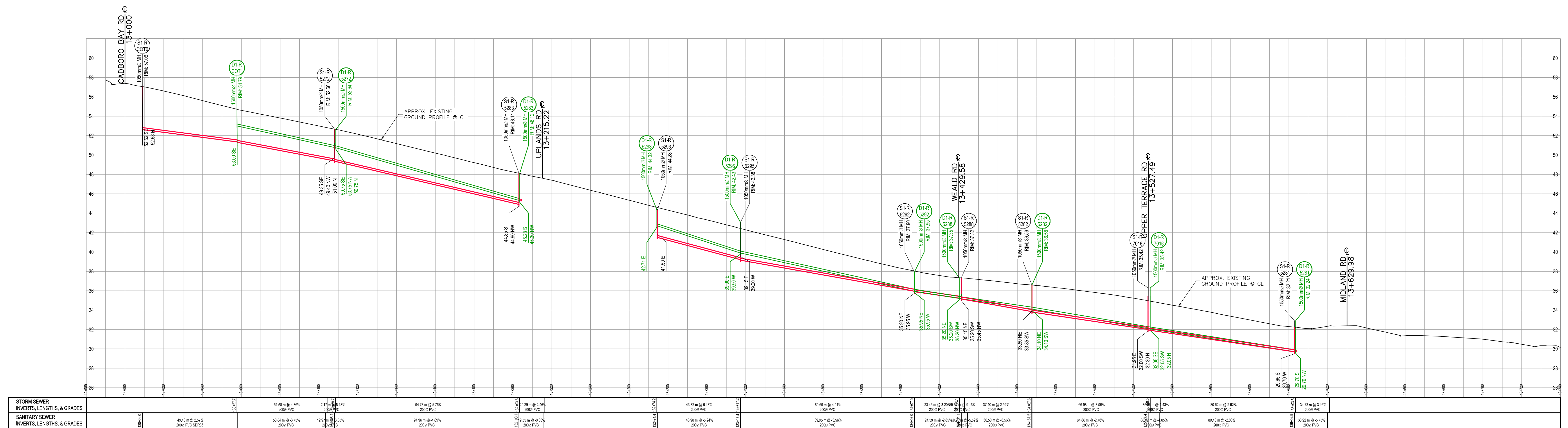
SEAL

PROJECT:  
UPLANDS COMBINED SEWER SEPARATION  
EXISTING SYSTEM

TITLE:  
SITE PLAN  
POSSIBLE COMMUNITY STORMWATER  
STORAGE LOCATIONS

SCALE HORIZ: 1:3000 VERT: N/A	ISSUED/REVISION
APPROVING AUTHORITY FILE NO.	
DRAWING NO.	FIGURE 7





THIS DRAWING AND DESIGN IS THE PROPERTY OF McELHANNEY CONSULTING SERVICES LTD. AND SHALL NOT BE USED, REUSED, OR REPRODUCED WITHOUT THE CONSENT OF THE SAID COMPANY. McELHANNEY CONSULTING SERVICES LTD. WILL NOT BE HELD RESPONSIBLE FOR THE IMPROPER OR UNAUTHORIZED USE OF THIS DRAWING AND DESIGN.

[illegible]

**McElhanney**  
McElhanney Consulting Services Ltd.  
500 - 3960 QUADRA STREET  
VICTORIA, BC V8X 4A3  
PH (250) 370-9221  
FAX (250) 370-9223

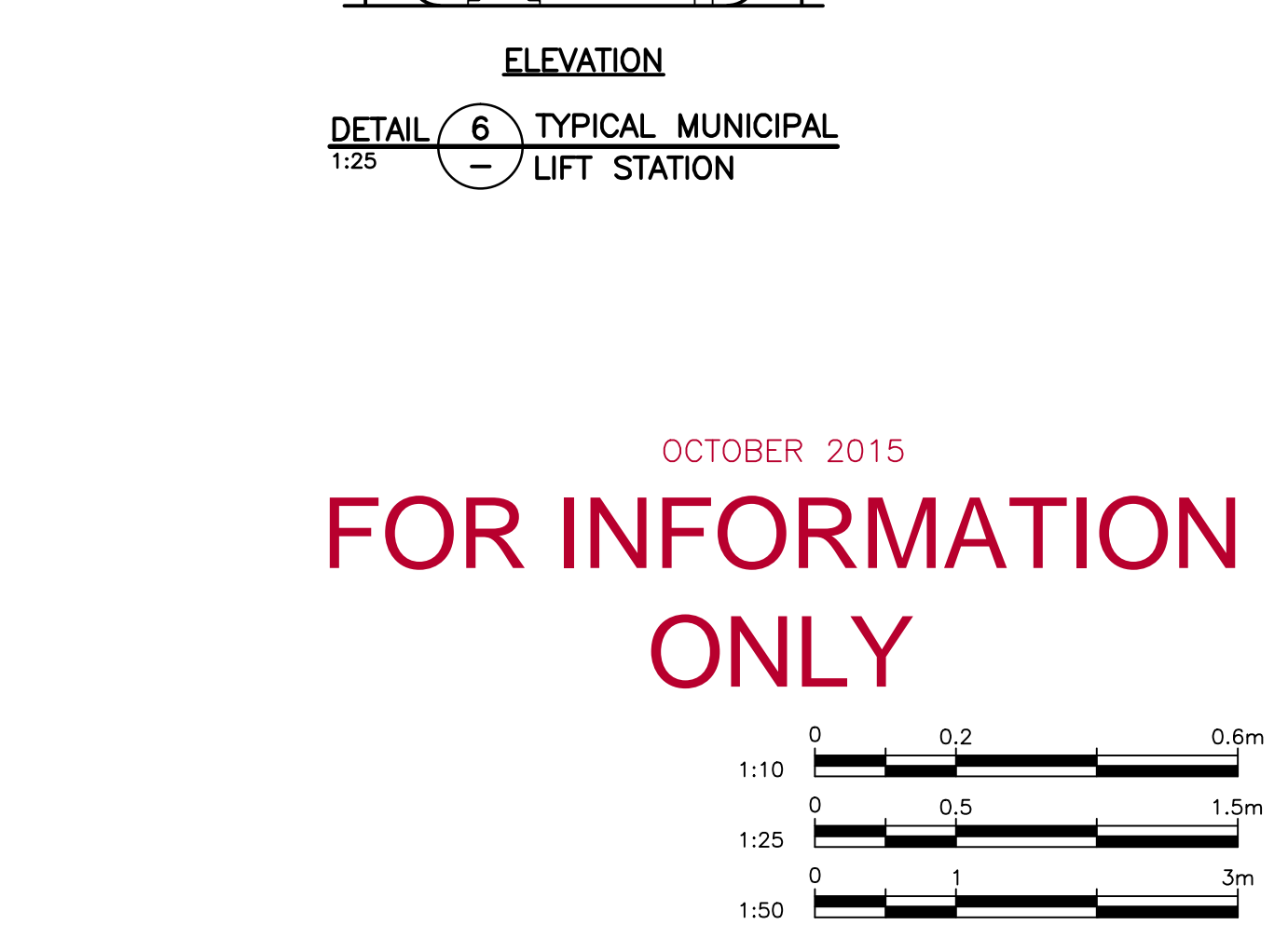
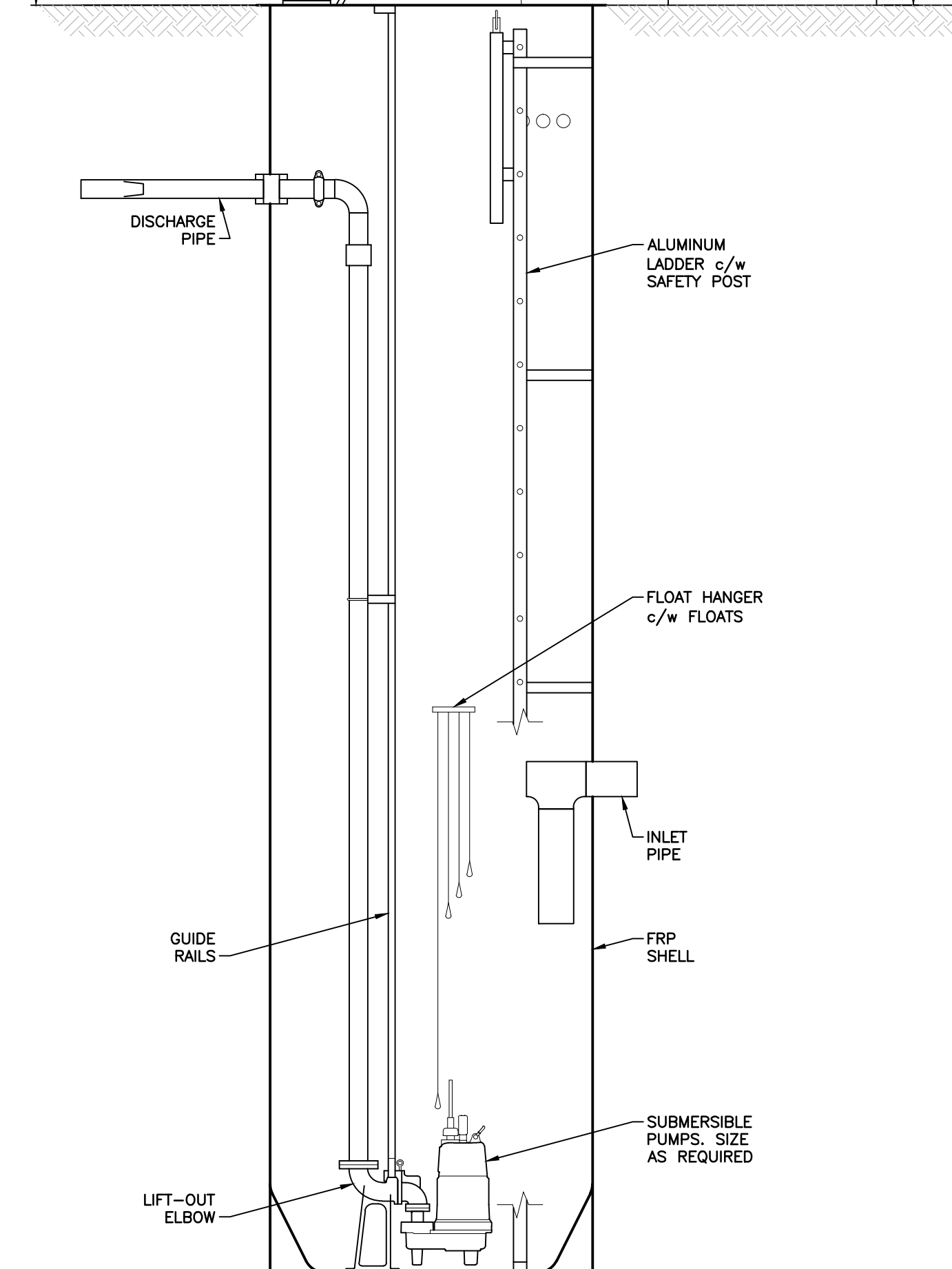
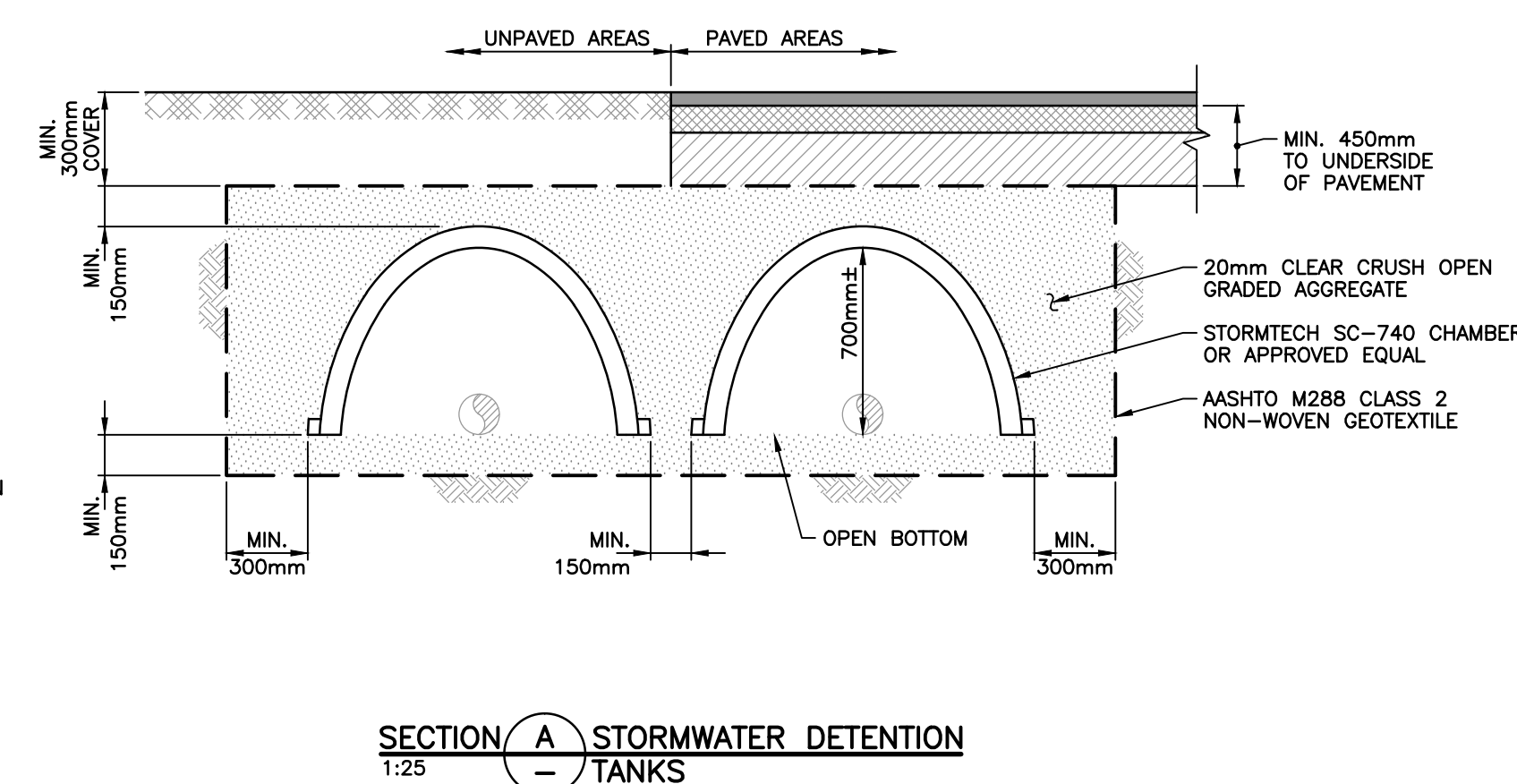
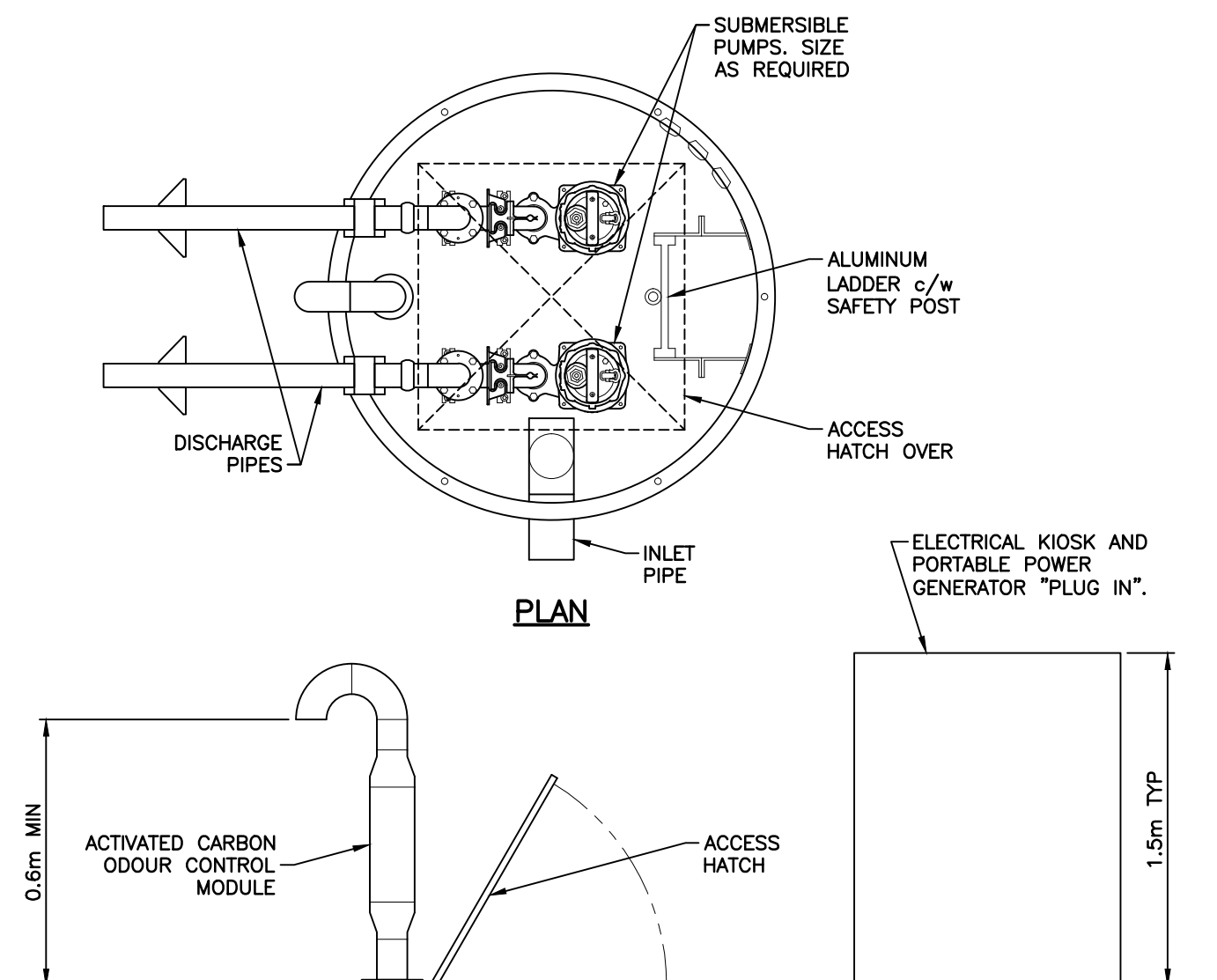
SEAL

PROJECT:  
UPLANDS COMBINED SEWER SEPARATION

TITLE:  
SAMPLE PRLIMINARY PLAN/PROFILE DRAWING

SCALE	
HORIZ: 1:1000	VERT: 1:200
PROJECT NO. 15-326	ISSUED/REVISION
APPROVING AUTHORITY FILE NO.	
DRAWING NO.	
FIGURE 8	





SCALE	
HORIZ: AS NOTED VERT: N/A	
PROJECT NO. 15-326	ISSUED/REVISION
APPROVING AUTHORITY FILE NO.	
DRAWING NO.	
FIGURE 9	



