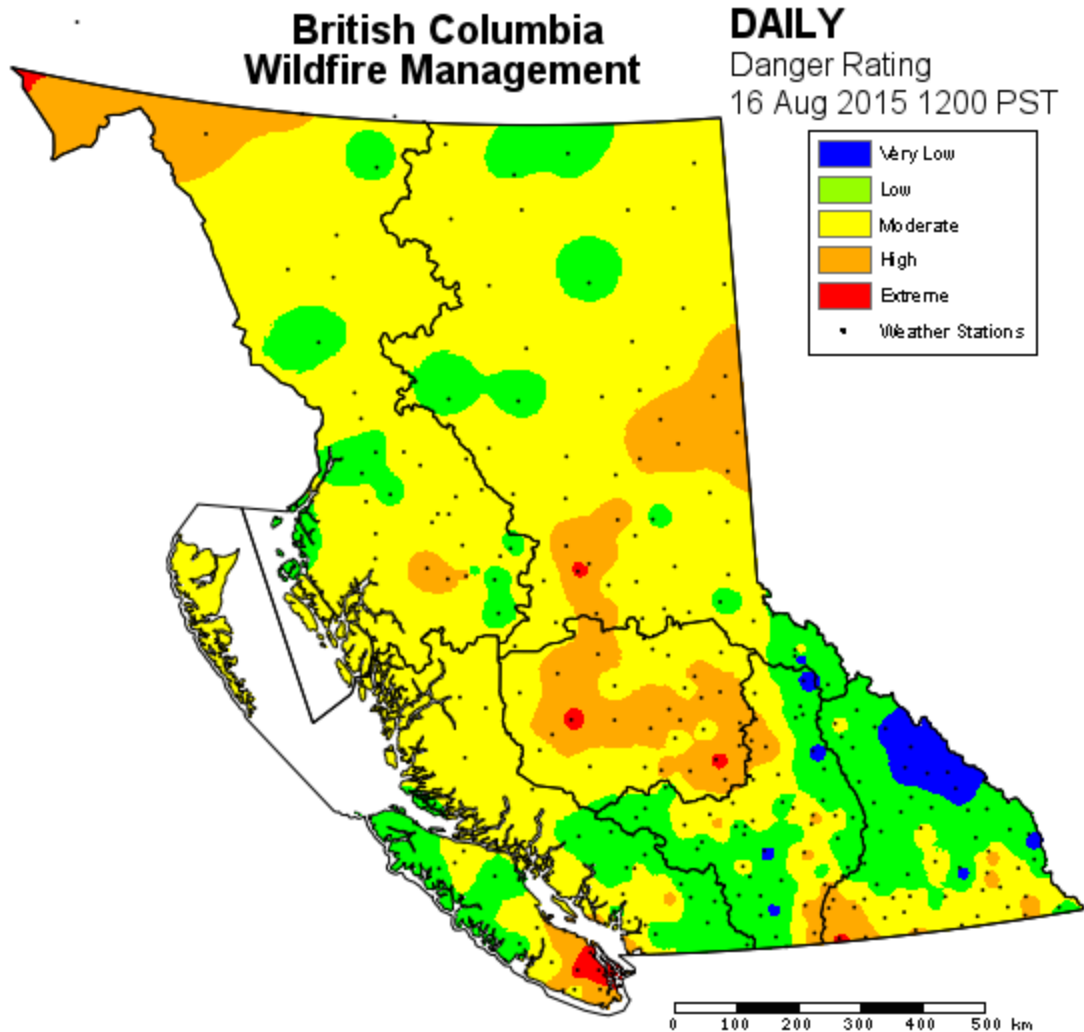


**The burning and campfire bans are still active in all southern regions of the island and in most interior regions.**

The decision when or where to implement a fire ban is made by the regional fire centres, depending on local fire hazards or dangers, the type of weather conditions forecasted and the type of fire activity we were experiencing. Campfire bans can be implemented in anticipation of an increase in lightning-caused fires. During critical fire situations, the Wildfire Management Branch can't afford to risk having human-caused fires divert resources from naturally-caused ones. In these situations, campfires present an unacceptable risk and detract from detection and response capabilities by increasing the number of 'false-alarm' smoke chases, forest fire phone reports, and nuisance fires. (source; bcwildfire.ca)



For more information on fire bans and fire information visit the BC Wildfire website at <http://engage.gov.bc.ca/bcwildfire/> or the Oak Bay Municipal website at <https://www.oakbay.ca/public-safety/fire-department>