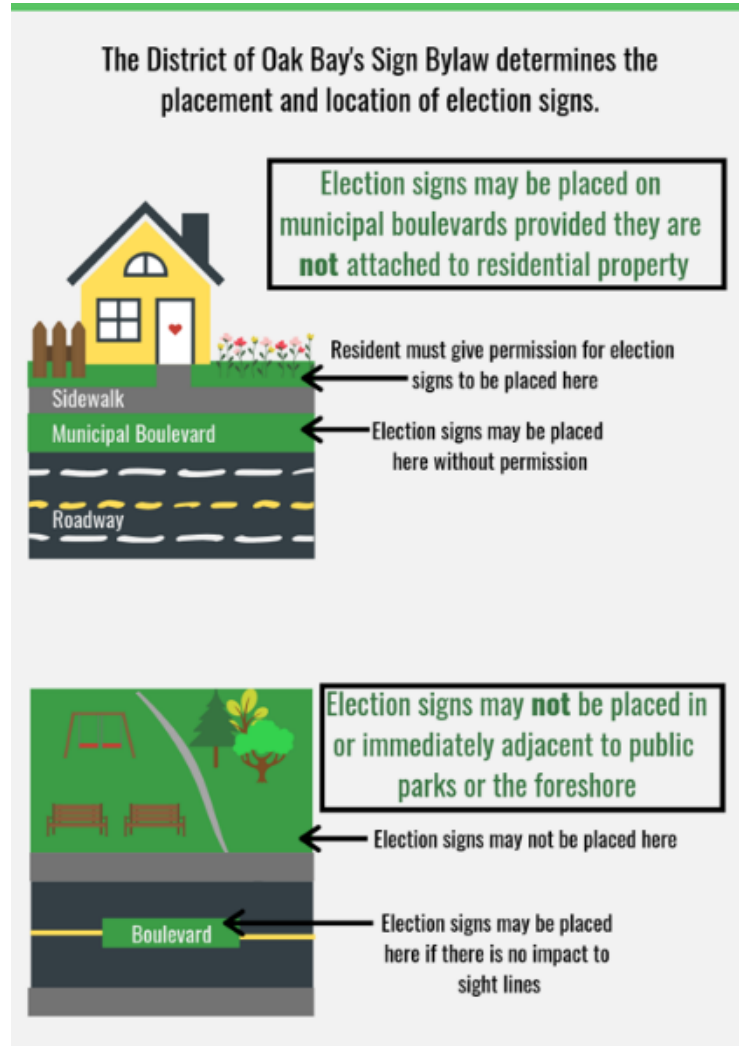


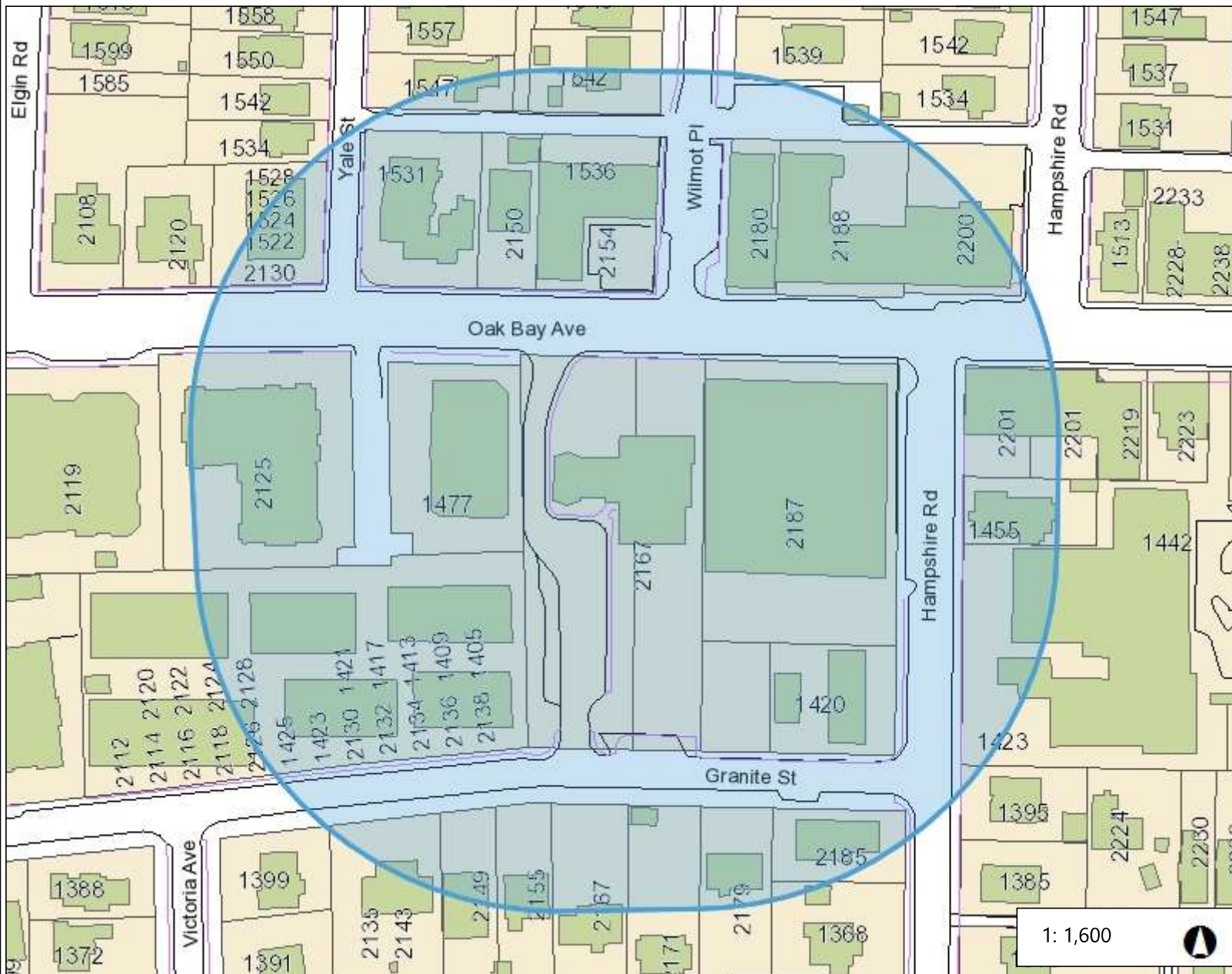
During the permitted time period for election signs, posters, placards and handbills, please observe the following:

- Signs must not be placed before September 9th and removal is required by the end of day on October 19, 2022.
- No signs are permitted within 100 metres of any Voting Place (refer to maps provided) on any voting day, inclusive of Advance Voting Days at Municipal Hall.
- Candidates are reminded that during the course of the Campaign Period, signs often get blown over or damaged. Please ensure that you check your signs frequently to ensure that the signage does not create an untidy appearance or a hazard.
- In addition to the District of Oak Bay's Sign Bylaw (excerpt provided in nomination package), please note:
 - Telus and BC Hydro do not allow the placement of signs on their telephone or hydro poles. Individuals placing such signs may be subject to fines.
 - The Ministry of Transportation and Infrastructure has rules in place that apply to elections addressing the placement of election signs. Visit www.gov.bc.ca/electionsigns for more information about supplemental signs.



See attached – 100 Metre Radius Maps for:

1. Municipal Hall (applies on Advance Voting Days Oct 5 and 12, 2022)
2. Monterey Middle School (applies on General Voting Day – Oct 15, 2022)
3. Emmanuel Baptist Church (applies on General Voting day – Oct 15, 2022)



Legend

- Road Names
- Sidewalk
- Curb Line
- Building Footprint
- Parcel
- Municipal Boundary
- Water
- Oak Bay
- Victoria
- Saanich

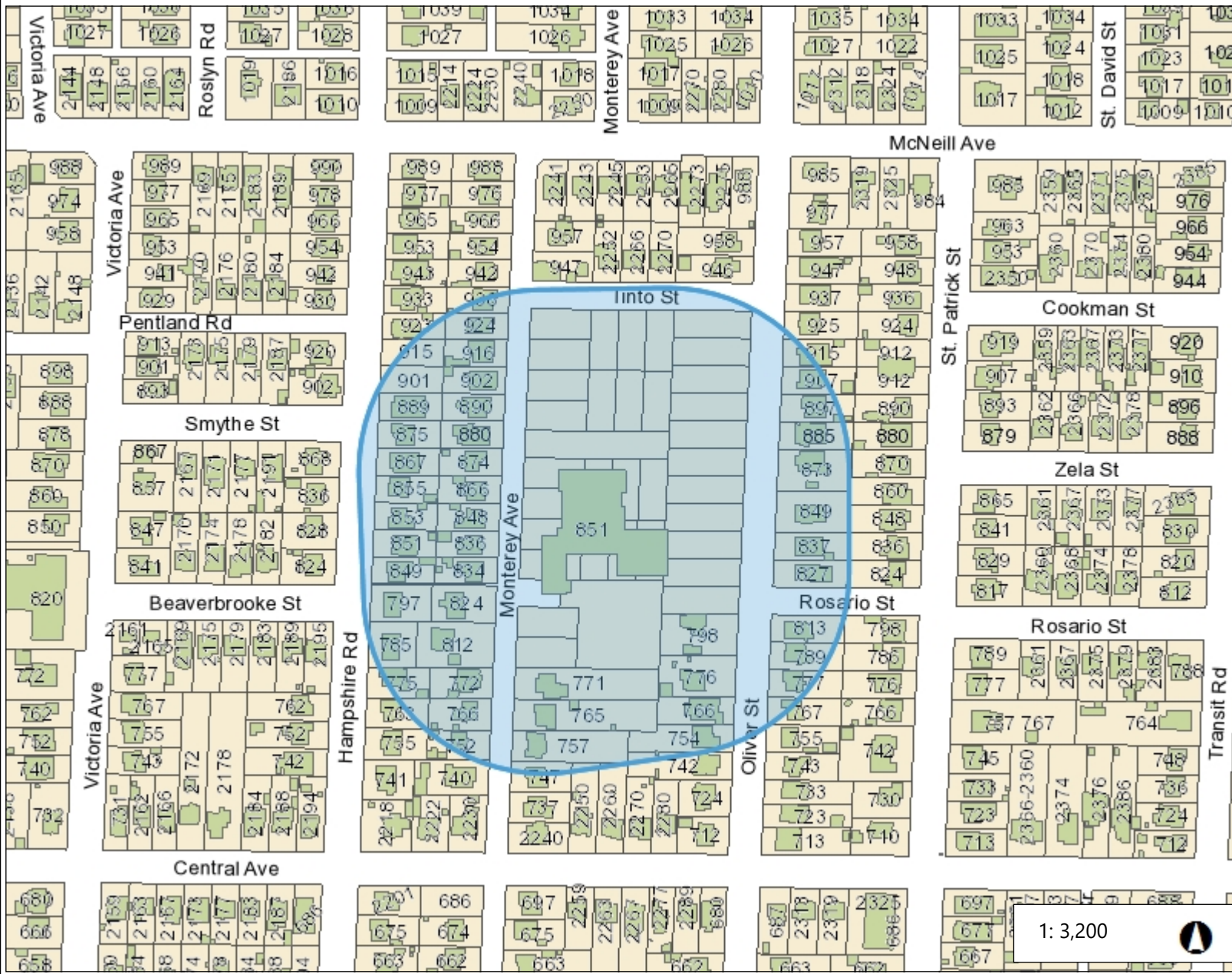
Notes

0.1 0 0.04 0.1 Kilometers

NAD_1983_UTM_Zone_10N
© Latitude Geographics Group Ltd.

This map is a user generated static output from an Internet mapping site and is for reference only. Data layers that appear on this map may or may not be accurate, current, or otherwise reliable.

THIS MAP IS NOT TO BE USED FOR NAVIGATION



Legend

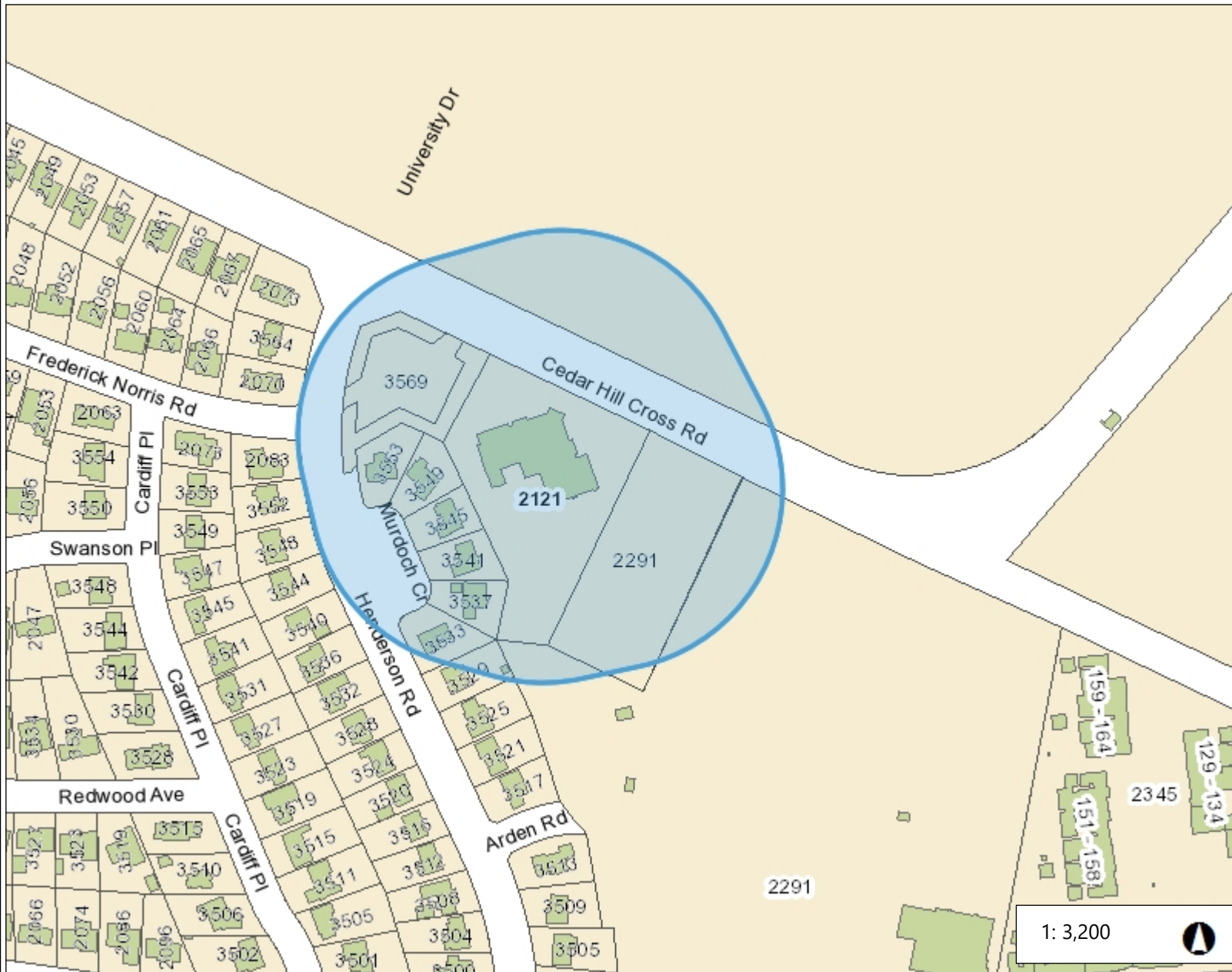
- Road Names
- Building Footprint
- Parcel
- Municipal Boundary
- Water
- Oak Bay
- Victoria
- Saanich

1: 3,200

Notes

0.2 0 0.08 0.2 Kilometers

This map is a user generated static output from an Internet mapping site and is for reference only. Data layers that appear on this map may or may not be accurate, current, or otherwise reliable.



Legend

- Road Names
- Building Footprint
- Parcel
- Municipal Boundary
- Water
- Oak Bay
- Victoria
- Saanich

1: 3,200



0.2 0 0.08 0.2 Kilometers

Notes